

YOUTHESSTA

SEMI-ANNUAL MAGAZINE

DEPARTMENT OF
CSE - Data Science
AND
CSE - Artificial Intelligence & Machine Learning



E - Magazine
VOL #1



AVANTHI

INSTITUTE OF ENGINEERING & TECHNOLOGY

Cherukupalli (V), Near Tagarapuvalasa Bridge, Bhogapuram (M), Vizianagaram (Dist)

DEPARTMENT HIGHLIGHTS OF CSE - DS , AI & ML**CSE - DATA SCIENCE :**

The CSE - Data Science department was established with B.Tech Program in 2020 with intake of 60 students. The world is awash in huge volume of data and currently data scientist specialists are needed for unlocking its potential for various organizations. The B.Tech Computer Science and Engineering program with specialization in Data Science is an innovative, exponentially rising field which consists of a set of tools and techniques used to extract useful information from data. It emphasizes to enhance student skills in Data Science by imparting them mathematical models with engineering and scientific principles to unravel solutions for real time problems. Due to the large growth in the scope of data, every business depends on data-driven decision making. The curriculum of this program is systematically designed to expose students to various data analysis areas such as data mining, statistics, predictive analysis, programming for data science, data visualization etc., The undergraduates of this program go on to become Data Scientists, Data Engineer, Data Warehouse Architect, Business Intelligent Analysts, Big Data Architects and Research Scientist.

CSE - AI & ML :

The CSE - Artificial Intelligence and Machine Learning department was established with B.Tech Program in 2020 with intake of 60 students and this was increased to 120 students in 2022-2023. Artificial Intelligence (AI) and Machine Learning (ML) are the demanded technologies in the industry for design and development of intelligent systems. Government of India is focusing on boosting AI sector in India for extending its applications to various initiatives viz., smart cities, precision agriculture, healthcare etc. The B.Tech Computer Science and Engineering program with specialization in Artificial Intelligence and Machine learning program is intended at studying, designing, developing, implementing, support and management of computer-based information systems. This specialization will enable the student to design and develop various intelligent systems with cutting edge technology courses viz., artificial intelligence, machine learning, computer vision, robotics, mobile application development, deep learning and natural language processing etc. The program will nurture the student skills in AI and ML to provide the scalable solutions for the industry technological problems. The undergraduates of this program go on to become Machine Learning Engineer, Machine Learning Research Engineer, Artificial Intelligence Research Engineer, Big data Scientist and Robotics Professional etc.



AVANTHI

INSTITUTE OF ENGINEERING & TECHNOLOGY

Cherukupalli (V), Near Tagarapavalasa Bridge, Bhogapuram (M), Vizianagaram (Dist)

DEPARTMENT OF
CSE - Data Science
AND

CSE - Artificial Intelligence & Machine Learning

E-MAGAZINE - YOUTHESTA VOL#1

CONTENTS

- From the Desk of the Chairman
- From the Desk of the President
- From the Desk of the General Secretary
- From the Desk of the Vice President
- From the Desk of the Managing Director
- From the Desk of the Principal
- From the Desk of the Director - HR
- From the Desk of the HOD
- Faculty Articles
- Student Articles
- Student Arts
- Student Poetry
- Important Facts of CSD & CSM
- Faculty Art

STUDENT COORDINATORS:

- Lodagala Teja (II CSD - 20Q71A4417)
- S.G.R.P.R.Lakshmi (II CSD - 20Q71A4434)
- M.Dinesh (II CSM - 20Q71A4253)
- S. Jayanthi (II CSM - 20Q71A4219)

STUDENT EDITORS:

- M.Sai Teja (II CSD - 21Q75A4402)
- N.Abhi Ram (II CSD - 20Q71A4401)
- Y.V.S.Sundeeep (II CSM - 20Q71A4242)
- P.Radha Vinodh (II CSM - 20Q71A4229)

ADVISORS:

- **Mrs .P. Sri Lakshmi**
Assoc. Professor and Head of CSD&M Dept.
- **Mr. S Chanti**
Asst. Prof, CSD&M Dept.
- **Mr. Gangu Dharma Raju**
Asst. Prof, CSD&M Dept.
- **Mrs. Sangita Mishra**
Asst. Prof, CSD&M Dept.
- **Ms. B Renuka Sai**
Asst. Prof, CSD&M Dept.
- **Mrs. Bhavani**
Teaching Asst., CSD&M Dept.

MESSAGES

FROM THE CHAIRMAN DESK



Sri. M. Srinivasa Rao
Ex Minister Govt. Of AP,
Member of Legislative
Assembly, Bheemili.
Founder's & Chairman of
Avanthi Group of Educational
Institutions

FROM THE PRESIDENT DESK



Smt. M Gnaneswari
President
Avanthi Group of Educational
Institutions

Welcome to the Department of CSE - Data Science, Artificial Intelligence & Machine Learning, Avanthi Institute of Engineering & Technology. It gives me pride and pleasure to introduce CSE - DS, AI&ML. The Department of Computer Science has designed innovative UG program in CSE - DS, AI&ML. Our aim is to provide a high quality engineering education to our students with adequate hand-on experience. Faculty members in the department have expertise in the areas of Wireless Networks, Data Networks, Big Data, Data Analytics, Data Science, Machine Learning, Artificial Intelligence, Cloud Computing, Image Processing, Information Retrieval and are guiding carrying out active research. Our department looks forward to contribute in solving technological challenges of the society with active participation from all sections of the society.

It gives me immense pleasure to note that the first Magazine of "YOUTHESTA" CSE - Data Science, Artificial Intelligence & Machine Learning department is being released. Kudos to the editorial team. When we have a glance at the Magazine, it is heartening to see that training the head and the heart of staff and students had quietly happened over the past six months. The staff and students will get more recognition when the awards/achievements they won are publicized through the Magazine. It would definitely be an inspiration and motivation for other students and staff to scale newer heights.

MESSAGES

FROM THE GENERAL SECRETARY DESK



Dr. M Priyanka
General Secretary
Avanathi Group of
Educational Institutions

It is a matter of great pride and satisfaction for Avanathi Institute of Engineering & Technology to bring out the Magazine 'YOUTHESTA' Released from the Department of CSE - Data Science, Artificial Intelligence & Machine Learning . The College has made tremendous progress in all areas academic, non-academics, capacity building relevant to staff and students. I am confident that this issue of Department Magazine will send a positive signal to the staff, students and the person who are interested in the Technical education and Technology based activities. A Magazine is like a mirror which reflects the clear picture of all sorts of activities undertaken by a Department and develops writing skills among students in particular and teaching faculty in general. I congratulate the Editorial Board of this Magazine who have played wonderful role in accomplishing the task in Record time. I express my heartfelt Congratulations to staff members and Students for their fruitful effort.

FROM THE VICE PRESIDENT DESK



Sri. M V S S Nandish
Vice President
Avanathi Group of Educational
Institutions

Greetings and welcome to the maiden issue of the "YOUTHESTA" CSE - Data Science, Artificial Intelligence & Machine Learning department Magazine! A Magazine inspires and motivates students and staff alike, for it reminds them of the zeal that they had once to do something extraordinary. We were overwhelmed by the response that we received from the coordinators, heads of departments and faculty members of CSE - Data Science, Artificial Intelligence & Machine Learning department in making this Magazine possible. In this Magazine. We have reported significant achievements of the Departments, Staff and Students. I am glad to acknowledge the kind support that I received directly and indirectly, to bring out the Magazine on time.

MESSAGES

FROM THE MANAGING DIRECTOR DESK



Sri. I Sravan Kumar
Managing Director
Avanathi Group of
Educational Institutions

It is my pleasure to congratulate the editorial board on this pleasant occasion of releasing the newsletter for the period January to June 2022. It is great to find a considerable number of winners and participants in co-curricular and extracurricular activities which certainly prove that our staff and students are adequately equipped and possess necessary quality skill-sets to bring such laurels to the institution. I wish that this number may grow in the years to come. I am sure that publishing a newsletter of this sort containing the achievements of the family will be a recognition to them. I wish them all the very best for future endeavors.

FROM THE PRINCIPAL DESK



Dr. S.N.V.Ganesh
Principal
Avanathi Institute of Engineering
& Technology

We are in an era that witnesses an alarming growth in the field of CSE - Data Science, Artificial Intelligence & Machine Learning. This unprecedented growth paved the way for the best learning as well as umpteen career opportunities. Presentations, group discussions, seminars, workshops, conferences and various other programs helps to improve the overall personality of the students. The department has a very good infrastructure and seasoned faculty who are research oriented and are involved in contributing their research papers in various national and international journals. Industry- Institute collaboration at regular intervals helps to bridge the gap between the academia and industry. An institution's name is based on its alumni . We are proud to say that our alumni are placed in reputed multinationals like Wipro, Accenture, HCL , Cognizant, IBM and many more. All through these years our placement track record is outstanding. I am sure that the department of CSE – DS, AI&ML will work aggressively towards the path

MESSAGES

FROM THE DIRECTOR – HR DESK



Dr.A.Chandra Sekhar
Professor & Director – HR
Avanthi Institute of
Engineering & Technology

The scope of CSE - Data Science, Artificial Intelligence & Machine Learning is endless and it is the favorite in every college. New age courses like Artificial Intelligence and Data Science are also well received by many students. After covid, the demand for Computer Science graduates is higher than ever. At Avanthi Institute of Engineering and Technology, the branch of CSE – DS, AI&ML continues to grow and thrive at an alarming rate both in student capacity and knowledge sharing quality.

Industry- Institute interactions, presentations, conferences, seminars, guest lecturers keep the students and faculty abreast with the latest trends in the competitive world. 100% placement facility is the hallmark of the department. The department is garnered by a team of hard working faculty members who strive and thrive to implement the best and the latest teaching practices. All in all the department welcomes all trends in learning and prepares the students to face the corporate world with confidence.

FROM THE HOD DESK



Mrs.P.Sri Lakshmi
Assoc. Professor and
Head of CSD&M Dept.

It is immense pleasure to present this semi-annual Magazine “YOUTHESTA” CSE - Data Science, Artificial Intelligence & Machine Learning department is the dynamic and vibrant department with the blend of young and experienced Faculty. Department is actively involved in academic as well as research work in current areas of Data Science, Machine Learning and multi-disciplinary streams. The department has well equipped labs with the state of art software and hardware. The faculty members are constantly publishing technical papers in national and international journals and conferences. The department is fortunate to have dedicated teachers, devoted students, and committed supporting staff and expert technical staff. Specially, I encourage my students to participate in various extra-curricular activities, research work and competitive exams. My best wishes to all for their bright career and successful life.

FACULTY ARTICLES

An Efficient Swift Routing Model with Node Trust Identity Factor (SRM-NTIF) to Perform Secure Data Transmission

According to a United Nations survey, the number of users using the internet has increased to 3 billion in recent years. The Auto-ID Center is a research organisation that coined the word "Internet of Things" (IoT) a decade ago, describing how it utilises wired or wireless networking technologies to create a channel of communication among technologies and networks available over the Internet. All IoT nodes willing to engage in data transmission are given a Digital Unique Identifier (DUI), and the proposed model must define their trust identity factors. Using the DUI, the proposed Swift Routing Model with Node Trust Identity Factor (SRM-NTIF) model, node authentication is performed to verify natural and malicious nodes in the network. The proposed model is compared with the traditional methods and the results show that the proposed model performance is better in security



Mrs.P Sri Lakshmi,M.Tech.,(Ph.D)
Associate Professor & HOD – CSD&M



Mr.G Dharma Raju,M.Tech.,Asst. Professor

An Efficient Approach to Publish The Data of Multiple Sensitive Attributes Using Modified (l,m,d) Algorithm

Existing processes for patients' vital data collection require a great deal of labor work to collect, input and analyze the information. These processes are usually slow and error prone, introducing a latency that prevents real-time data accessibility. This scenario restrains the clinical diagnostics and monitoring capabilities. We propose a solution to automate this process by using "sensors" attached to existing medical equipments that are inter-connected to exchange service. The proposal is based on the concepts of utility computing and wireless sensor networks. The information becomes available in the "cloud" from where it can be processed by expert systems and/or distributed to medical staff. The proof-of-concept design applies commodity computing integrated to legacy medical devices, ensuring cost effectiveness and simple integration.

A Cloud Computing Resolution In Medical Care Institutions For Patient's Data Collection

Existing processes for patients' vital data collection require a great deal of labor work to collect, input and analyze the information. These processes are usually slow and error prone, introducing a latency that prevents real-time data accessibility. This scenario restrains the clinical diagnostics and monitoring capabilities. We propose a solution to automate this process by using "sensors" attached to existing medical equipments that are inter-connected to exchange service. The proposal is based on the concepts of utility computing and wireless sensor networks. The information becomes available in the "cloud" from where it can be processed by expert systems and/or distributed to medical staff. The proof-of-concept design applies commodity computing integrated to legacy medical devices, ensuring cost effectiveness and simple integration.



Ms.B.Renuka Sai,M.Tech.,Asst. Professor

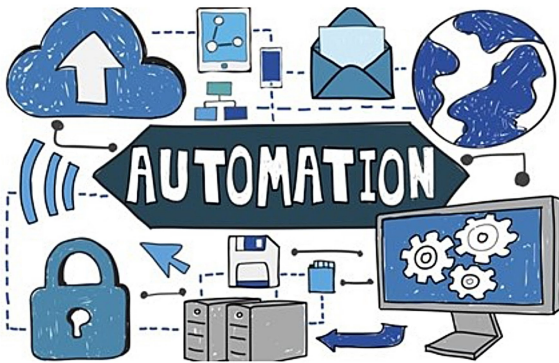


Mrs.Sangita Mishra,M.Tech.,Asst. Professor

Cellular Automata and their Applications: A Review

Cellular Automata (CAs) are among the oldest model of natural computing, dating back over a half century. The journey of cellular automata were originally proposed by Jon Von Neumann in the late 1940s as formal models of biological self-reproduction, the goal was to design self replicating artificial systems that are also computationally universal. The framework studied was mostly based on one and two dimensional infinite grids though higher dimensions were also considered. At the beginning, CAs were only focus on the concept of computer science and mathematics.

STUDENT ARTICLES

Automated Data Cleaning

Data cleaning is the process of identifying and removing the errors in the data warehouse. While collecting and combining data from various sources into a data warehouse, ensuring high data quality and consistency becomes a significant, often expensive and always challenging task. Without clean and correct data the usefulness of Data Mining and data warehousing is mitigated. This paper analyses the problem of data

Automated Data Cleaning aims towards creating a framework for cleaning raw, erroneous structured datasets like Tabular Data and unstructured data like images and audio samples to yield a clean enough data sample that can be efficiently used for further processing. Any dataset is obtained by consolidating information from numerous sources which makes it prone to errors and inconsistencies. Data that is incomplete or inaccurate is known as dirty data. Here dirty data is the norm rather than the exception. Thus the various types of anomalies occurring in data .



N. Abhiram
20Q71A4401



D. Dinesh Kumar
20Q71A4411

REF : https://www.researchgate.net/publication/352063621_AUTOMATED_DATA_CLEANING

Digital Twins

“Digital twins are becoming a business imperative, covering the culture lifecycle of an asset or process forming the foundation for connected products and services. Companies that fail to respond will be left behind.”

The concept of Digital Twin is the result of thorough, ingenious research and it has played a vital role in shaping today’s technology including Artificial Intelligence,



S. Jayanthi
20Q71A4219



D. Eswari Indu
20Q71A4247

The optimization achieved through Digital Twin minimizes the downtime and cost of development. The best use case of Digital Twin was already demonstrated in the case of NASA’s Apollo 13 project and this is what makes the history of Digital Twin so pronounced, so substantial to read. It laid a firm foreground to how Digital Twin strategy will revolutionize the era of technology. The health industry has also realized the significance of Digital Twin modelling amidst the Coronavirus

REF : <https://youtu.be/iVS-AuSjPOQ>

The Convergence of Hyperautomation Technologies

When Gartner named Hyperautomation as the #1 hot technology of 2020, the market was still fragmented. Vendors primarily offered RPA software, BPM vendors confined themselves mainly to human worker orchestration. Process Mining or Document AI were technologies alien to RPA. But, the emergence of Hyperautomation changed all that. Today, there is a mad rush to bring the various HA technologies into one umbrella. The convergence of HA technologies is the dominant theme for many automation vendors.



S.G.R.P.R.Lakshmi
20Q71A4434



Lodagala.Teja
20Q71A4417

Leading BPM vendors today offer RPA software in their platform. Similarly, several leading RPA vendors realize the need to bring human workforce capabilities such as forms, intuitive UI, SLAs, etc. All of them handle workflows to a fair degree. Most vendors are racing to provide Process Mining, Analytics, AI, and other HA capabilities in their product mix.

REF : <https://timesofindia.indiatimes.com>

Metaverse



The metaverse is a concept of a persistent, online, 3D universe that combines multiple different virtual spaces. You can think of it as a future iteration of the internet. The metaverse will allow users to work, meet, game, and socialize together in these 3D spaces. The metaverse isn't fully in existence, but some platforms contain metaverse-like elements. Video games currently provide the closest metaverse experience on offer. Developers have pushed the boundaries of what a game is through hosting in-game events and creating virtual economies. Although not required, cryptocurrencies can be a great fit for a metaverse. They allow for creating a digital economy with different types of utility tokens and from the use of crypto wallets, such as Trust Wallet and

As we mentioned, the metaverse will combine all aspects of life in one place. While many people already work at home, in the metaverse, you will be able to enter a 3D office and interact with your colleagues' avatars. Your job may also be metaverse related and provide you with income directly usable in the metaverse. In fact, these kinds of jobs already exist in a similar form.



J.Navya Teja
20Q71A4218



P.Radha Vinodh
20Q71A4229

REF : <https://dappradar.com/blog/what-is-the-metaverse>

STUDENT ARTICLES

Transcript Excavation

Text mining, also referred to as text data mining, similar to text analytics, is the process of deriving high-quality information from text. It involves "the discovery by computer of new, previously unknown information. This is also called as "TEXT MINING". It is a fast-growing field as the big data field is growing, so the scope is very promising in the future as the amount of Text Data is increasing exponentially day by day. Moreover, social media platforms generate many text data that can be mined to get real insights into different domains.

The goal of text mining is to be able to process large textual data to extract "high quality" information.

REF : www.sciencedirect.com



U.Sowmya Sree
20Q71A4440



S.Lavanya
20Q71A4433

Human Augmentation

Human augmentation is an area of research that seeks to extend and expand human capability. This can come in the form of many things, be it through medical or technological advancements. For example, people ingest chemical substances to improve specific abilities like focus or strength. Sometimes, they also take up implants or undergo operations to enhance different bodily functions or features. While the previous two examples illustrate invasive human augmentation, this technology isn't always so. Some human augmentation enhancements take the form of external objects. For instance, spectacles are a simple external human augmentation tool to improve eyesight. Other items like binoculars, microphones, and microscopes also serve as external human augmentation tools for different purposes. You can even find human augmentation tools in your smart devices that can augment reality through AR.



S.Swarna Mythili
20Q71A4202



K.Raj Kumar
20Q71A4207

REF : <https://robots.net/ai/human-augmentation/>

STUDENT ARTICLES

Automation of Machine Learning



C.Sri Harsha
20Q71A4409



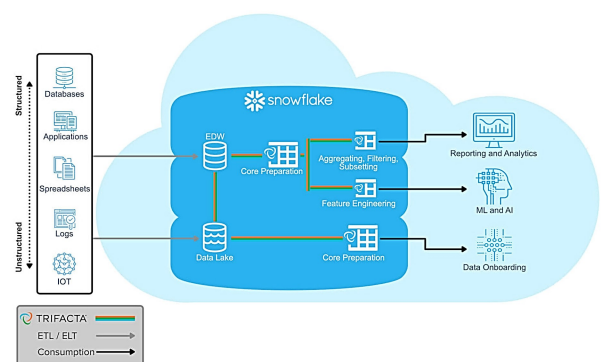
N.Dhana Lakshmi
20Q71A4424

This work aims to provide a review of the existing literature in the field of automated machine learning (AutoML) to help healthcare professionals better utilize machine learning models “off-the-shelf” with limited data science expertise. We also identify the potential opportunities and barriers to using AutoML in healthcare, as well as existing applications of AutoML in healthcare. Published papers, accompanied with code, describing work in the field of AutoML from both a computer science perspective or a biomedical informatics perspective were reviewed. We also provide a short summary of a series of AutoML challenges hosted by ChaLearn. AutoML revealed that these automated techniques can match or improve upon expert human performance in certain machine learning tasks, often in a shorter amount of time. The main limitation of AutoML at this point is the ability to get these systems to work efficiently on a large scale, i.e. beyond small- and medium-size retrospective datasets

REF : https://www.researchgate.net/publication/339417976_Automated_Machine_Learning

Snowflake with Artificial Intelligence & Machine Learning

Snowflake's platform was designed from the ground up to support machine learning and AI-driven data science applications. Snowflake enables enterprises to prepare data and build ML models with ease. Customers don't need to worry about complex integrations or related expenses. Instead they can focus on AI initiatives. Snowflake offers an essential service for businesses looking to respond to the needs of Industry 4.0. Data analysis is important in business to understand problems facing an organisation and to explore data in meaningful ways.



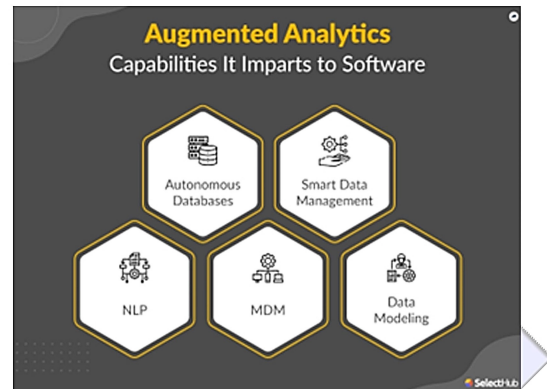
M.Jyothika
20Q71A4254

REF : <https://www.snaplogic.com/blog/snowflake-data-platform>

STUDENT ARTICLES

Augmented Analytics

Augmented analytics can make analysts' work faster, more efficient, and more accurate. Machine learning and natural language technologies also help to bring domain experts people embedded in the business closer to their data by removing technical barriers to analysis, including making more advanced techniques available to people with less mature data skills and experience. Augmented analytics is the use of enabling technologies such as machine learning and AI to assist with data preparation, insight generation and insight explanation to augment how people explore



R.Deepika
20Q71A4447



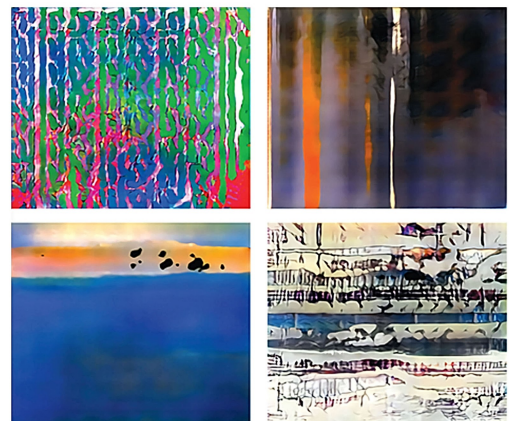
P.Vasavi
20Q71A4425

and analyse data in analytics and BI platforms. From large enterprises looking to reduce the analytic load of their term to surfacing risk and opportunities immediately or for software developers adding capability and value beyond traditional reporting used cases for augmented analytics are broad.

REF : www.xenonstack.com

AI Is Blurring the Definition of Artist

With artificial intelligence (AI) becoming incorporated into more aspects of our daily lives, from writing to driving, it's only natural that artists would also start to experiment with it. Indeed, Christie's recently sold its first piece of auctioned AI art a blurred face titled "Portrait of Edmond Belamy" for \$432,500. The piece sold at Christie's is part of a new wave of AI art created via machine learning. Paris-based artists Hugo Caselles-Dupré, Pierre Fautrel, and Gauthier Vernier fed thousands of portraits into an algorithm, "teaching" it the aesthetics of past examples of portraiture. The algorithm then created "Portrait of Edmond Belamy." The painting is "not the product of a human mind," Christie's noted in its preview. "It was created by artificial intelligence, an algorithm defined by algebraic formula."



CH.Sastha
20Q71A4207



Y.V.S.Sundeep
20Q71A4242

REF : <https://www.americanscientist.org>

STUDENT ARTICLES

Amazon Rekognition

Amazon Rekognition provides two API sets. You use Amazon Rekognition Image for analyzing images, and Amazon Rekognition Video for analyzing videos. Both APIs analyze images and videos to provide insights you can use in your applications. For example, you could use Amazon Rekognition Image to enhance the customer experience for a photo management application. When a customer uploads a photo, your application can use Amazon Rekognition Image to detect real-world objects or faces in the image. After your application stores the information returned from Amazon Rekognition Image, the user could then query their photo collection for photos with a specific object or face. Deeper querying is possible. For example, the user could query for



R.Manasa
20Q71A4427

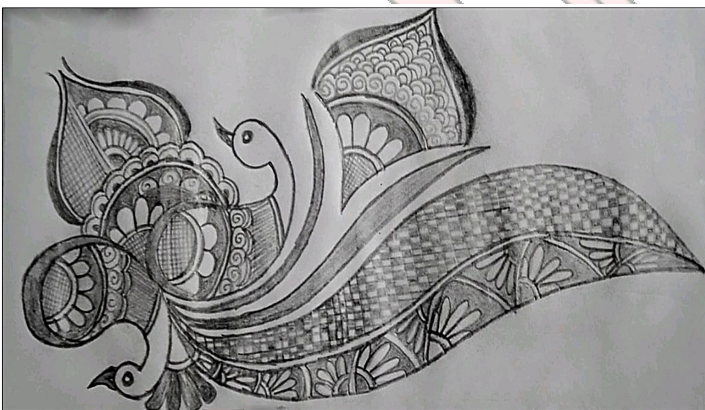


V.Priyanka
20Q71A4449

faces that are smiling or query for faces that are a certain age. You can use Amazon Rekognition Video to track the path of people in a stored video. Alternatively, you can use Amazon Rekognition Video to search a streaming video for persons whose facial descriptions match facial descriptions already stored by Amazon Rekognition.

REF : <https://docs.aws.amazon.com/rekognition/latest/dg/what-is.html>

STUDENT ARTS



S.Jayanthi
20Q71A4219



G.Hymavathi
20Q71A4414

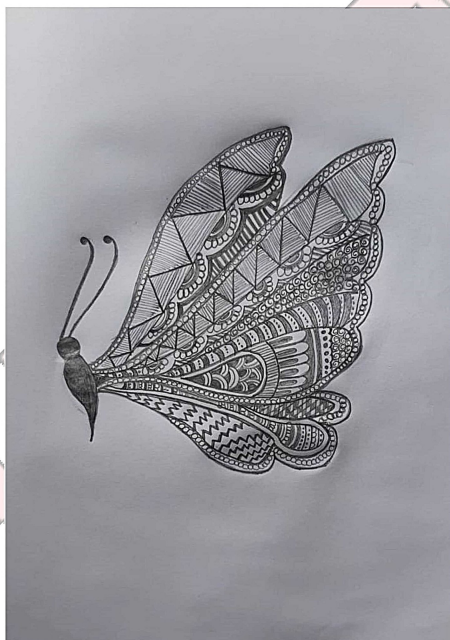
STUDENT ARTS



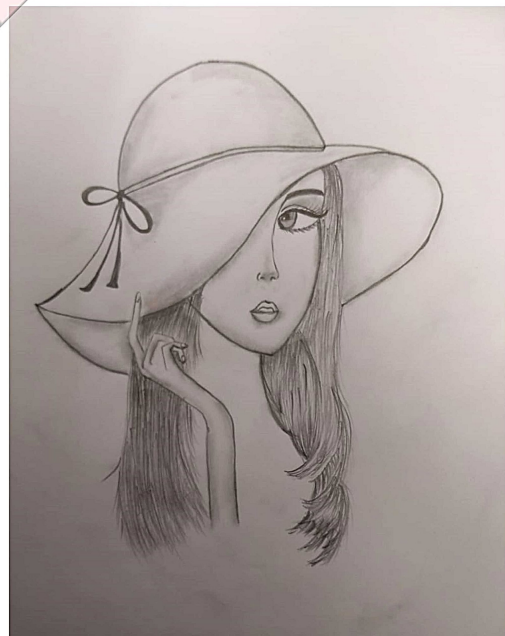
V.Priyanka
20Q71A4449



S.G.R.P.R.Lakshmi
20Q71A4434

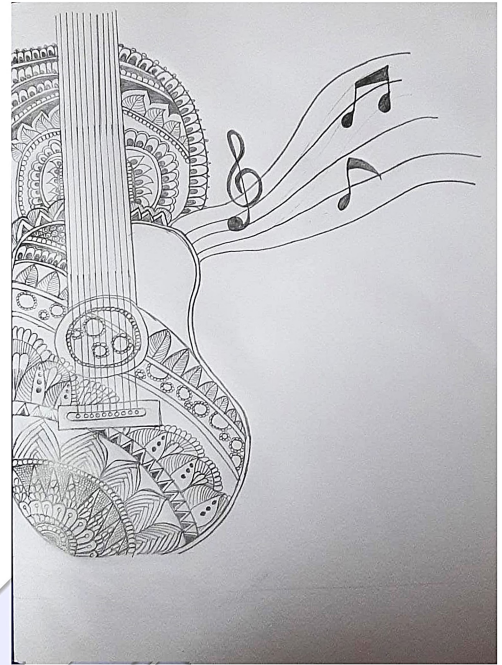
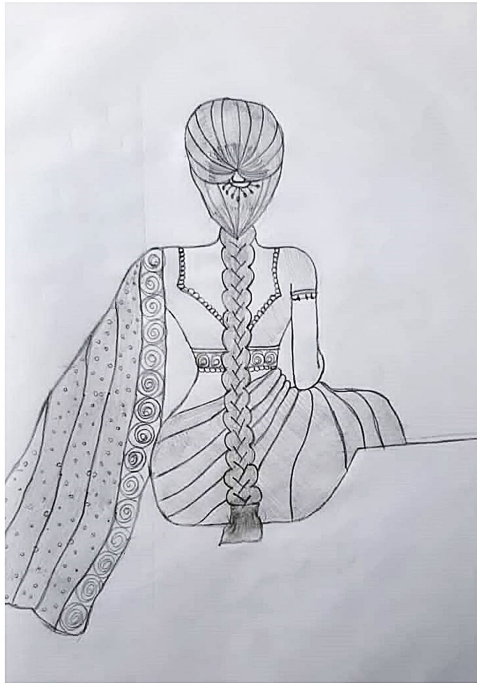


S.Lavanya
20Q71A4433



N.Dhana Lakshmi
20Q71A4424

STUDENT ARTS



- S.Lavanya
20Q71A4433

STUDENT ARTS



N.Dhana Lakshmi

20Q71A4424



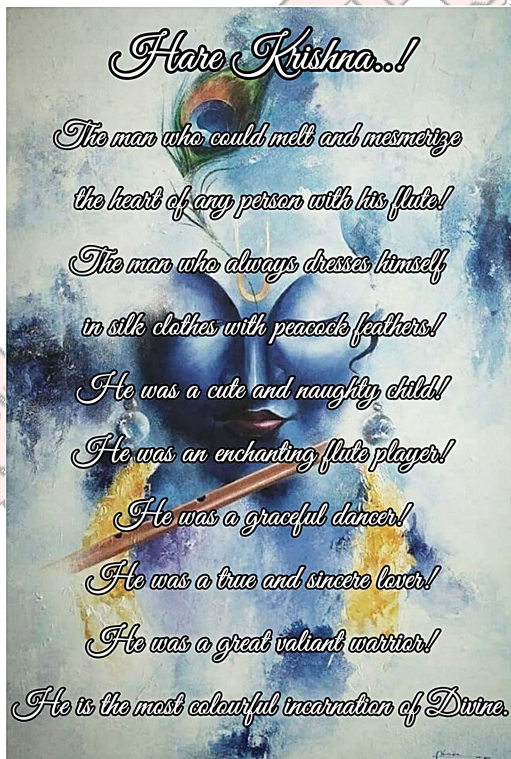
S.G.R.P.R.Lakshmi

20Q71A4434

STUDENT POETRY



B.Jaisheel
20Q71A4443



Y.Likhitha
20Q71A4243

IMPORTANT FACTS

CSE - DATA SCIENCE :

- Data is Never Clean.
- There is No Full Automated Data Science.
- Big Data is Just a Tool.
- Data Scientists and Data Analysts are Not Same.
- Data Science is Not Just Excel Sheets.
- More Data Does Not Always Mean More Accuracy.
- Data Science Field has Different Role, Not Just Data Scientists.

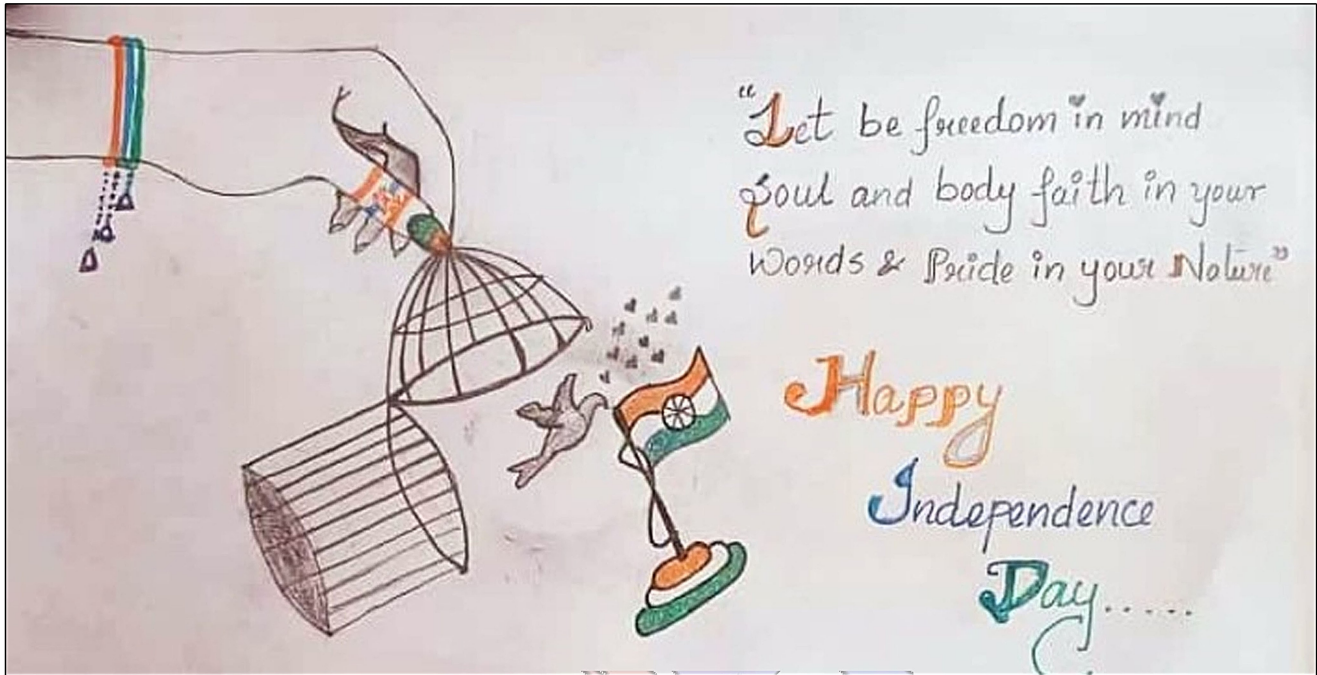
FOR BRIEF REF : <https://codinghero.ai/interesting-facts-about-data-science/>

CSE - AI & ML :

- Artificial Intelligence can predict earthquakes and volcanoes and many other natural disasters.
- Artificial Intelligence is restoring vintage and damaged photos.
- Artificial Intelligence is helping us fight the cancer.
- The meaning of Machine learning is learning from data.
- The main component of Machine learning is Data.
- Machine learning results depend on the Data you entered to train it.
- Poor data representation affects the working of Machine learning.
- Data Transformation is the hardest part of ML work.

FOR BRIEF DEF : 1. <https://www.sprintzeal.com/blog/facts-about-artificial-intelligence>
2. <https://hackernoon.com/machine-learning-10-facts-everyone-needs-to-understand>

FACULTY ART



Mrs. Sangita Mishra, M.Tech.,
Assistant Professor

THE END



WORKSHOP ON WEB DEVELOPMENT USING DJANGO FRAMEWORK WITH PYTHON



FULL STACK DEVELOPMENT crash course being conducted by AVANTHI INSTITUTION

OUR INSTITUTIONS

AVANTHI DEGREE & P.G. COLLEGE
Barkatpura & Narayanguda, Hyderabad.

AVANTHI PG COLLEGE
Dilsukhnagar, Hyderabad. (ICET CODE: AN/NT)

AVANTHI INSTITUTE OF ENGINEERING & TECHNOLOGY
Gunthapally, Near Ramoji Film City. Hyd. (EAMCET CODE: AVIH)

AVANTHI INSTITUTE OF PHARMACEUTICAL SCIENCES
Gunthapally, Near Ramoji Film City, Hyd. (EAMCET CODE: AVHP)

AVANTHI'S SCIENTIFIC TECHNOLOGICAL & RESEARCH ACADEMY
Gunthapally, Near Ramoji Film City. Hyderabad. (EAMCET CODE: ASRA)

AVANTHI P.G. & RESEARCH ACADEMY
Gunthapally, Near Ramoji Film City. Hyd. (ICET CODE: APRA)

AVANTHI INSTITUTE OF ENGINEERING AND TECHNOLOGY
Makavarapalem, Visakhapatnam. (EAMCET CODE: AVEN)

AVANTHI DEGREE COLLEGE
Near Tagarapuvalsa Bridge, Vizianagaram.

AVANTHI'S St. THERESA INSTITUTE OF ENGINEERING & TECHNOLOGY
Garvidi, Vizianagaram. (EAMCET CODE: STIC)

AVANTHI INSTITUTE OF ENGINEERING & TECHNOLOGY
Cherukupally. Near Tagarapuvalsa, Vizianagaram. (EAMCET CODE: AVEV)

AVANTHI INSTITUTE OF PHARMACEUTICAL SCIENCES
Cherukupally, Near Tagarapuvalsa, Vizianagaram. (EAMCET CODE: AVNP)

AVANTHI POLYTECHNIC COLLEGE
Ravada (V), Bhogapuram (M), Vizianagaram. (ECET CODE: APCB)

AVANTHI RESEARCH & TECHNOLOGICAL ACADEMY
Basavapalem (V), Bhogapuram (M). Vizianagaram. (EAMCET CODE: ARTB)